

# SMART REMOTE MONITORING & SOLAR ASSET MANAGEMENT



# Our Core Values & Offerings

---



## Best Customer Support

At DSE, we value each relationship. That's why we aim to provide the industry's best support, training, and solution to our customers. Our success managers insure your success first when you work with us.



## Turn your data into Actionable Insights

Our cloud-based platform takes the guesswork out of operations & maintenance with its actionable insights. Historical & live data analysis on the plant and individual asset performance on daily, monthly, & yearly basis.



## Industry's own Trusted Name

DSE is trusted by global companies when it comes to solar auditing, data analytics, & asset management. Trusted by companies like Tata, Adani, Sterling & Wilson, Jackson, Azure, Renew, and many more.



# Table of Contents

---

**01**     **About DSE**

**02**     **Data Logger**

**03**     **4G Models**

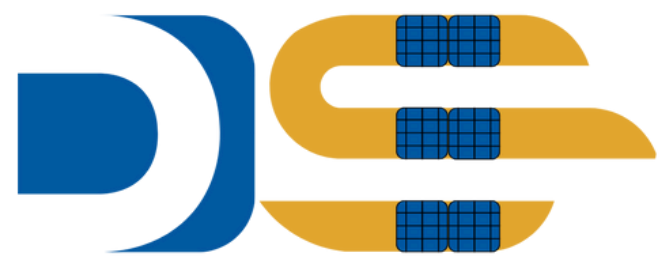
**04**     **WIFI Models**

**05**     **LAN Models**

**06**     **Max Series**

**07**     **DG Protection Solution**





# Distributed Solar Energize

DSE was started by engineers on a mission to improve monitoring, analytics and performance of power plants & clean energy sector using an amalgamation of technology, training, and community.



Serial no: SJ4218-100-1201  
Lat,Long: 23.366340, 70.626123  
Make: Sungrow  
Rating: 650KW, 320 V  
Localization: Inverter-2

Inverter-2

One stop solution for all your solar asset management needs.



Solar Power



Energy Meter



Generator



Weather Station



VFD



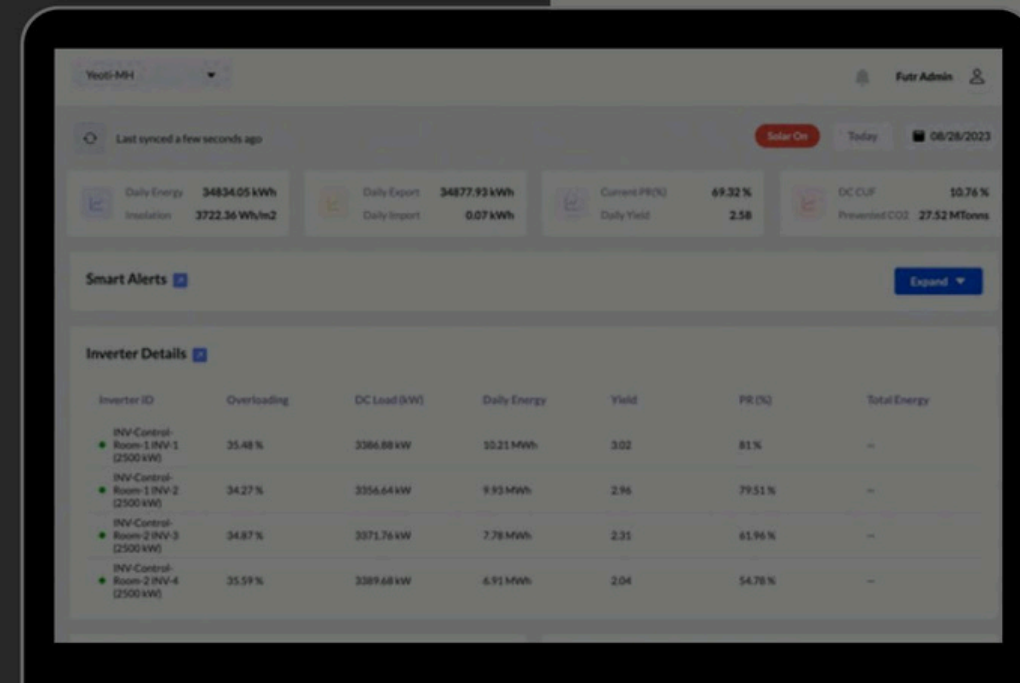
Inverter

Connect all your assets together, all at one place.

Connect

multiple devices and create smart automated flows.

Plug Play



Bring your whole plant portfolio to a single dashboard.

Dedicated success manager to ensure your success.

Save upto 40% on manual operational cost and multiple software subscription. Be stress free.

# One Stop Solution

DSE Logger's solutions automate monitoring, control, optimization, and maintenance, resulting in maximum generation and a predictable asset lifecycle.

DSE Loggers are compatible with all rooftop, grid-tie, hybrid and off-grid setups, solar water pumping and building loads, energy meters, weather stations, string monitoring systems, switchgears and analog, digital and MODBUS enabled sensors.



Connect all your Assets , at one Place.



Energy Meter



Weather Station



Generator



Solar Power



VFD



# 4G Variants

A smart RS485/I0/LORA to 4G/LTE gateway for seamless wireless data communication. It supports diverse protocols like TCP, HTTP, and MQTT with SSL, and features remote configuration and inbuilt logging for network resilience. Choose from various models tailored to your needs for uninterrupted connectivity.

Name	4G-LITE	4G-PRO	4G-LPRO
ADI IN 1	0 to 24V	0 to 24V	0 to 24V
ADI IN 2	YES / *PULSE	0 to 24V	0 to 24V
DI IN 3	-	0 to 24V	0 to 24V
DI IN 4	-	DI, PULSE	DI, PULSE
4 to 20mA IN	YES / *RELAY	YES	YES
Relay	* YES	YES	YES
RTU RS485	YES	YES	YES
TCP Modbus	-	YES	YES
LoRa Modbus	-	-	YES
Logger Size	17600 Records	17600 Records	17600 Records



# Wifi Variants

Our smart modbus gateways series replaces the complex approach of sending the modbus slave/IO data to the centralized server, either single or multiple slaves/nodes. The device has option to configure different interval settings can assign based on priority. Support multiple protocols like TCP or HTTP or MQTT mode. All the parameter are configurable via web configuration, PC utility, IP utility or server IP commands, all configurations can be done remotely too.

Name	WIFI-LITE	WIFI-PRO	WIFI-LPRO
ADI IN 1	0 to 24V	0 to 24V	0 to 24V
ADI IN 2	0 to 24V	0 to 24V	0 to 24V
DI IN 3	-	0 to 24V	0 to 24V
DI IN 4	-	DI, PULSE	DI, PULSE
4 to 20mA IN	1	1	1
Relay	-	1	1
RTU RS485	YES	YES	YES
LoRa Modbus	-	-	YES
Slave Block	32	64	64



# LAN Variants

The built-in smart data redundancy communication paths of ethernet in RTU gateway, the data would be guaranteed to transfer your centralized server, inbuilt logger enable during network/server disconnection, we assure that we won't lose single packet even in disconnection..

Name	LAN-LITE	LAN-PRO	LAN-LPRO
ADI IN 1	0 to 24V	0 to 24V	0 to 24V
ADI IN 2	0 to 24V	0 to 24V	0 to 24V
DI IN 3	-	0 to 24V	0 to 24V
DI IN 4	-	DI, PULSE	DI, PULSE
4 to 20mA IN	1	1	1
Relay	-	1	1
RTU RS485	YES	YES	YES
TCP Modbus	-	YES	YES
LoRa Modbus	-	-	YES
Slave Block	32	64	64



# MAX Variants

Max series gateways are smart loggers, which supports RTU/TCP Modbus/IO and LORA nodes to 4G, LAN and WIFI on different combinations for event transmission, primary and secondary options to avoid connectivity issues. Expand your data communication over wireless networks by FutrLogger IOT gateway with secure and two-way communication. Device supports multiple protocols, which you can choose TCP/HTTP/MQTT to cloud platform.





Model Name	MAX	MAXL	MAX	MAXL
4G	YES	YES	YES	YES
LAN	YES	YES	-	-
WIFI	-	-	YES	YES
LoRa	-	YES	-	YES
RTU RS485	YES	YES	YES	YES
TCP Modbus	YES	YES	-	-
ADIN	2DI + 2VI	2DI + 2VI	2DI + 2VI	2DI + 2VI
PULSE	*1-DIN	*1-DIN	*1-DIN	*1-DIN
4 to 20mA IN	1	1	1	1
RELAY	1	1	1	1



# DG Protection Solution

Unlike with zero feed in solutions where solar power can match building loads, diesel generators have a minimal loading that needs to be respected at all times - this is typically about 30% of the rated capacity.

DG Protection refers to the algorithm that ensures that the genset runs at minimal load at all times if possible, thus ensuring minimal fuel usage and maximal solar generation.

Feature	MEGA2-4G	ULTRA	MINI3	MINI3-4G
				
Processor	PIC32MZDA	PIC32MZDA	PIC32MZ	PIC32MZ
Voltage Rating	8-60V DC	8-60V DC	8-60V DC	8-60V DC
Power Consumption	< 2W	< 5W	<2 W	<5 W
RAM	32MB	32MB	512KB	512KB
Ethernet	✓	✓	✓	✓
WiFi	✗	✓	✗	✗
LTE Support	Built-in 4G LTE	Built-in 4G LTE	Via USB Dongle	Built-in 4G LTE
Max Devices	128	128	10	15



# Reach out our Sales Team.



+91-8920525465

Shahbaz@dsenergize.com

